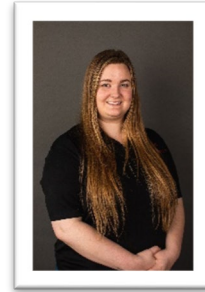


Contact: Brian Castell

Lighthouse Commodities, LLC

Phone: 701-516-8025

Email: bcastell@lighthousecommodities.com



Lighthouse Commodities, LLC Announces New Hires

BISMARCK, NORTH DAKOTA (July 6th, 2023) – Lighthouse Commodities, LLC, provider of professional merchandising and related services for farmers, today announces the hiring of Kelly McGregor as Grain Accountant and Alison Zezeus as Administrative Coordinator. Kelly will use her lengthy, proven accounting track record to lead Accounts Payable, compliance activities and various other accounting tasks that support nearly \$300 million in annual grain sales for Lighthouse. Alison will focus on contract management, ticket application, client experience, customer appreciation, Beacon Fund donations and other tasks that require strong commitment to detail.

“We’re excited to have Kelly and Alison in these key growth roles for Lighthouse. Expanding our accounting and administrative capabilities means providing an even higher level of service to the farmer clients we work for,” said David Spickler, President of Lighthouse Commodities.

About Lighthouse Commodities, LLC

Lighthouse Commodities, LLC (LHC) has been providing professional merchandising to farmers since 2015, equipping them with the same tools and resources the rest of the grain supply chain utilizes. To date we’ve marketed over 130 million bushels of farmer-client grain and evolved to include our own futures brokerage, analytics department, proprietary algorithms, freight brokerage and numerous other improvements. These Lighthouse advantages are part of a farm marketing service unlike anything else in the industry and we provide that service to farmer clients with over 700,000 acres of annual production.

Learn more at www.lighthousecommodities.com

###